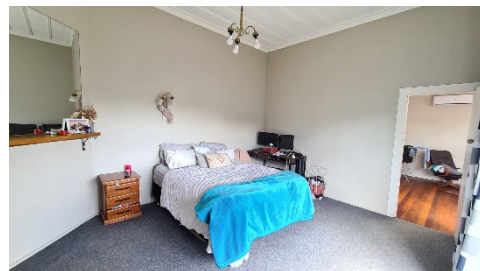




NAKITA

\$147,300 Inc GST

4 Bedroom / 1 Bathroom / Floor Area approx. 125 sqm



Introducing "NAKITA," boasting four generously sized bedrooms, this residence stands as a testament to space and grandeur. The high ceilings create an airy atmosphere, with a sense of openness and light throughout, while the native timber floors add warmth, character and durability. The heart of this abode lies in its expansive kitchen, that seamlessly connects to the adjoining dining and lounge areas, creating an open-plan living. NAKITA is timeless design, that's calling out for a touch of modernisation and your personal touch. Contact us to find out more.



FEATURES

- ✓ Native Timber Flooring and Cladding
- ✓ Tall Ceilings
- ✓ Large open-plan Kitchen

PRICE INCLUDES

- ✓ Two-piece move
- ✓ Delivered within 50km to a flat site with clear access
- ✓ Onto standard foundations

DISCLAIMER: *Advertised price is for transportation from the existing site only. Transportation from the yard will incur further costs upwards of \$10,000, location dependent.*

 2471 State Highway One, Brynderwyn

 Sales 0800 767 684

Phone now to view, you'll be glad you did!