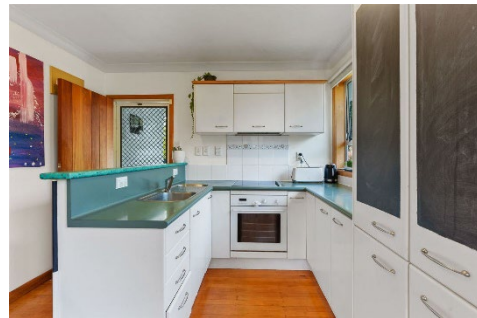




SAMMY

\$84,700 Inc GST

2 Bedroom / 1 Bathroom / Floor Area 80 sqm



SAMMY is a charming 2-bedroom house that boasts vintage elegance and modern comfort, Showcasing its original 1950s craftsmanship with beautiful wood floors that exude warmth and character. The house also features wood cladding, iron roofing and updated aluminium joinery. Its well-maintained features and inviting layout make it the perfect canvas for your personal touch and style. SAMMY is more than just a house; it's a piece of history waiting for you to make it your own. Don't miss this opportunity to own a piece of timeless beauty.





FEATURES

- ✓ Native Timber Flooring
- ✓ Timber Weatherboard Cladding
- ✓ Aluminium Windows and Joinery

PRICE INCLUDES

- ✓ One-piece move
- ✓ Delivered within 100km to a flat site with clear access
- ✓ Onto standard foundations

*DISCLAIMER: Advertised price is for transportation from the existing site only.
Transportation from the yard will incur further costs upwards of \$10,000, location
dependent.*

 **2471 State Highway One, Brynderwyn**
 **Bruce (Sales) 027 390 3898**
Phone now to view, you'll be glad you did!